



# LBA

## W-GATE 7580

INTELLIGENT FAST FOLDING GATE

The revolutionary high-security folding gate.

The only K12-tested double reverse crash gate, it features advanced artificial intelligence and an opening speed of up to 1 m/s.

It provides optimum protection for high-risk sites with a high volume of vehicles.

## ULTRA-STURDY & FAST FOLDING GATE

# CRASH TESTED 7.2 T AT 80KM/H

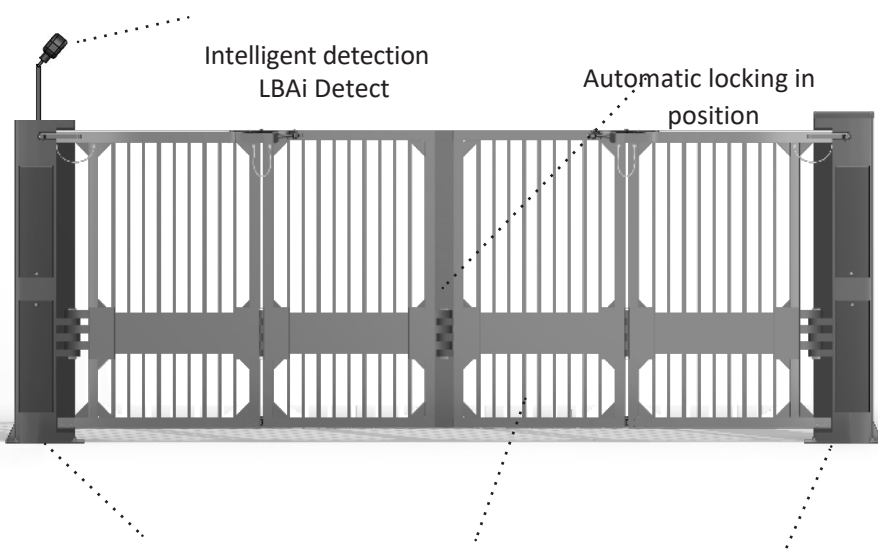
## OPENING 1M/S (DOUBLE VERSION)



EQUIVALENT K12 - 1 790 000 Joules

Intelligent detection  
LBAi Detect

Automatic locking in  
position



Motorization integrated  
into  
posts

Customizab  
le leaves

Low depth of  
sealing



### CRASH RATING

6m double model with N3 vehicle at  
80 km/h



### INTELLIGENT SECURITY

Patented system. Intelligent distinction  
between pedestrians and vehicles.  
Dynamic detection: obstacles to avoid the  
risk impact.



### INTENSIVE USE

Robust design for unlimited use.



### FAST OPENING SPEED REDUCED TRAVEL



### LOW SEALING DEPTH

# LBA W-GATE 7580

## CERTIFICATION

### Test conditions :

Double gate 6m clearance. Truck  
N3 7.2t/7.5t at 80 km/h

#### ISO22343

Gate barrier  
V/7200[N3C]/80/90

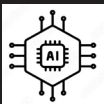
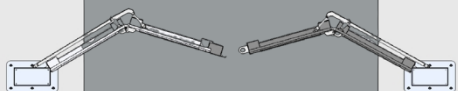
#### ASTM 2656M

U50 (DOS  
K12)



## OPENING DIAGRAM

### Top view



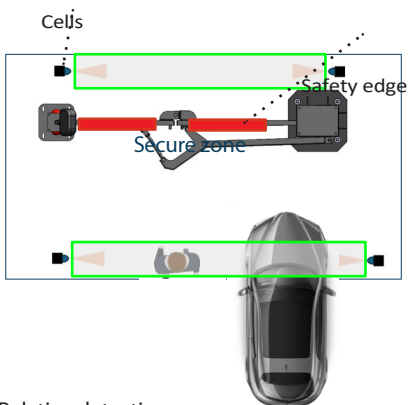
## ARTIFICIAL INTELLIGENCE SECURE ACCESS

Patented system

MORE +



### STANDARD CONFIGURATION



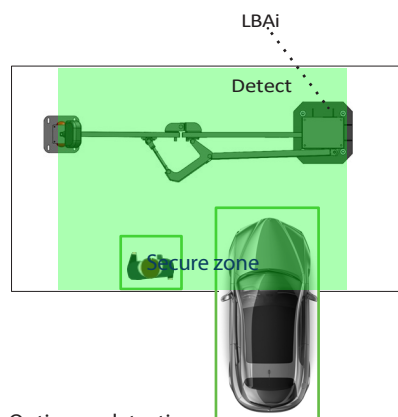
Relative detection zone,  
compensated by safety  
edges mounted on  
leaves

#### Standard safety

- No distinction between pedestrian and vehicle.
- Restricted user detection (at cell level)
- Obstruction detection by contact safety edge

- Safety edges: YES
- Upstream/downstream cells: YES Standard 13241-1
- CSTB validated: YES

### CONFIGURATION WITH LBAi DETECT



Optimum detection  
zone requires  
neither sensor nor  
safety edge

#### Safety with LBAi Detect

- The LBAi detection system distinguishes pedestrians from vehicles.
- Detection and typification of users within the entire safety (adjustable in advance)
- Early presence detection without impact

- Contact edges: NO
- Upstream/downstream cells: NO Standard 13241-1
- CSTB validated: YES

# LBA W-GATE 7580

## DETECTION PACK

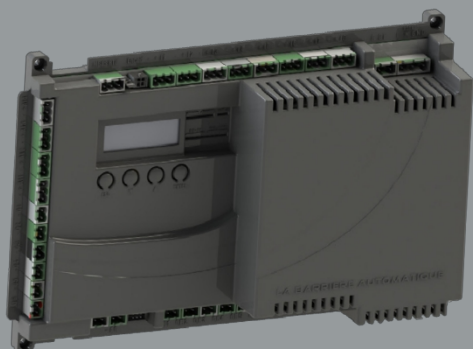
2 options available

- **LBAi Detect intelligent safety system:** image analysis using artificial intelligence to distinguish between pedestrians and vehicles. Detection zone can be customized according to site configuration, enabling user safety.

- **Standard safety package :** set of safety edges and safety cells detection

## MANAGEMENT SYSTEM

CARTE LBA ONE-C© , a card for scalable products



- **All-in-1 card:** a single interface for installation and maintenance.
- **Web server:** can be controlled remotely, enables management of all barrier parameters.
- **Simplicity:** PI-d category 2-certified PLC to EN ISO 13849-1 standard
- **User interface:** with display and view



## MAIN FEATURES

- Height from 2.5 m to 4 m
- Width from 3 to 8 m
- Motor integrated gate posts
- Automatic locking in closed position
- Low embedding depth (500 mm)
- Supplied with a set of infrared sensors attached to the gate jamb.
- Supplied with a second set of cells to be fixed on a support of your choice.

## TECHNICAL DATA

### Motorization :

- Low-consumption electric motor (0.25 Kw)
- Safe manual unlocking

### ONE-C card management :

- Wired or network cable control; several communication (Modbus TCP/IP, RS485)
- Program memory via SD card (supplied)
- Plug-in terminal box
- Easy to use
- Ergonomics

Power supply	230 V
Consumption	250 W
Motorization	Electric
Resistance	1,790,000 Joules
Operating time	1m/s (double version)
MCBF (number of cycles)	1 000 000**
MTBF (hours)	25 000
MTTR (min)	30
Widths	3-8 m
In the event of a power cut	Manually unlockable

\* depending on test conditions

\*\*subject to compliance with maintenance and servicing recommendations

## OPTIONAL EQUIPMENT

- Led Banners
- Aluminium design sheet with LBA Design motif
- **Classic safety**
  - Additional infrared cell set (for LV/PL management)
  - Steel support post for IR cell mounting
  - Safety edge
- **AI-assisted safety**
  - 1 camera with factory-set detection zones

