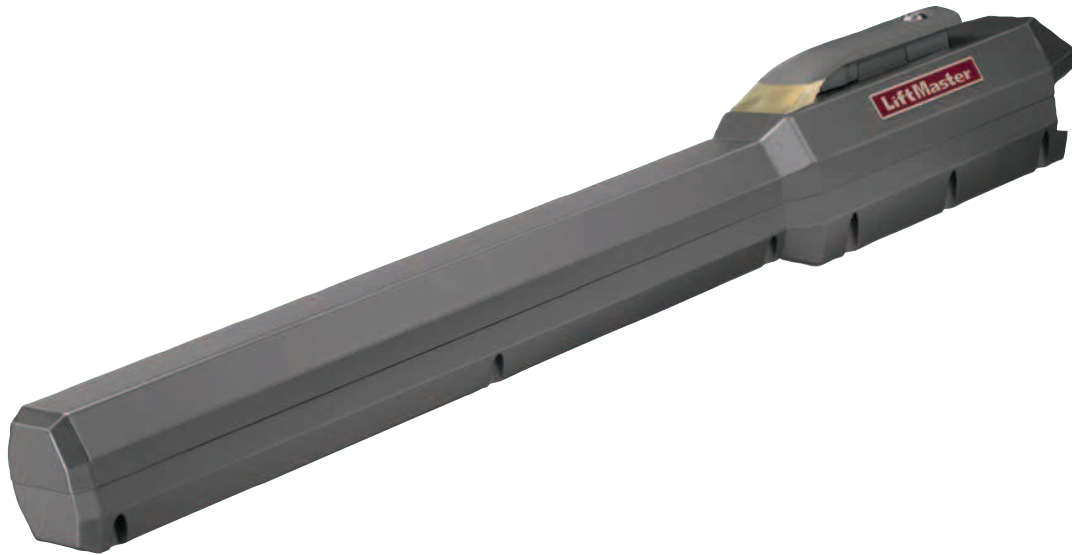


# WING GATE OPERATOR

## SCS500



**2-Year Full warranty**  
Install all equipment in compliance with EN60335-2-103.

High quality accessories included in the carton SCS500K-124 | SCS500-24



**3-channel mini remote control 94335E**



**Receiver 801221**



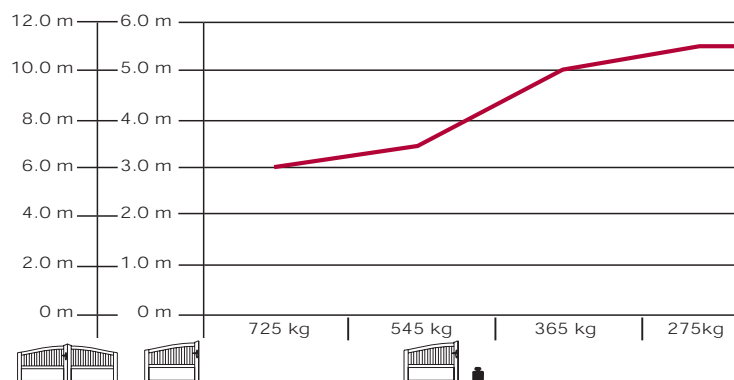
**IR Sensor 772E**



**Control 24 V CB124**



\* From Q III 2013, all LiftMaster Gate Operators will include the new 4-channel universal transmitter 433 MHz (TX4UNI). The TX4UNI universal transmitter can be used with any LiftMaster operator since 2003 which will enable you to operate all your LiftMaster Garage Door and Gate Operators with just one transmitter!



### Optional accessories



772E Infrared safety sensor



FLA1-LED Flashing light kit

**For more accessories please refer to the price book.**

### Technical Data

SCS500-24		
Voltage IN	V AC	220–240
Frequency	Hz	50
Motor voltage	V	24 DC
Power	W	240
Current	A	10
Capacitor	µF	–
Thermal overload protection	°C	–
Travel speed (arm)	90°	20 s
Travel	mm	510
Duty cycle	cycles/h	12
Working temperature range	°C	-20/+55
Protection class		I
Degree of protection	IP	44
Product weight (–)	kg	10
Max. gate wing length by 275 kg	m	5.5
Max. gate weight	kg	725

### Model & carton content chart

Model	Drive unit	Install brackets	Hard stops	Capacitor	Elec-tronic control	Battery operation	Remote control 94335E	Receiver & radio 801221	IR sensor 772E	Flashing light FLA1-LED	Key switch COM18010	Antenna kit ANT4X-1LM	Number of cartons
SCS500-24	1 x	•											1
SCS500K-124	2 x	•			•	optional	2 x	433 MHz	•	optional	optional	optional	4