

# HOLLER ||||| smart

## GATES AND FENCES

The perfect solution for private properties

---



---

CANTILEVER SLIDING GATES MANUAL/AUTOMATIC OPERATION  
FLOOR-GUIDED SLIDING GATES MANUAL/AUTOMATIC OPERATION  
SWING GATES MANUAL/AUTOMATIC OPERATION  
PEDESTRIAN GATES  
ALUMINIUM FENCE

version 01-2023

# *Cantilever Sliding Gate*



## MANUAL OPERATION

- ▶ Track profil HST25, 133x100 mm
- ▶ Frame construction: vertical profiles 80x50 mm, horizontal profiles 66x60 mm
- ▶ Connected carriages
- ▶ Ball bearing rollers, double roller guide on top profile
- ▶ Double guide post (150x150 and 110x74 mm) and double catch post (110x74 mm), incl. fixing plates
- ▶ Hook look with 3 keys

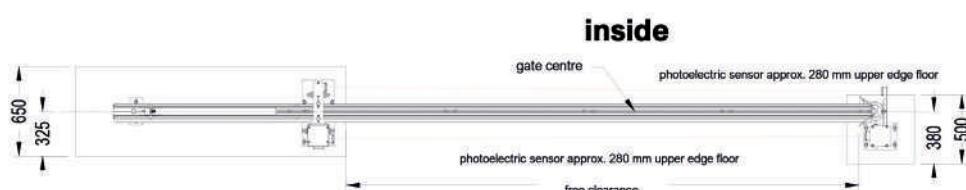
## AUTOMATIC OPERATION

- ▶ Plug & play pre-installed, track profile HST25, 133x100 mm
- ▶ Frame construction: vertical profiles 80x50 mm, horizontal profiles 66x60 mm
- ▶ Connected carriages
- ▶ Ball bearing rollers, double roller guide on top profile
- ▶ Double guide posts (drive post 150x150 and 110x74 mm) and double catch post (110x74 mm), incl. fixing plates
- ▶ Drive motor 24 V and control unit inside post
- ▶ Toothed rack, plastic
- ▶ Safety set consisting of 1 flashing light yellow, 2 safety photoelectric sensors, 1 remote control, inactive safety contact edge on all secondary closing edges, front and rear edges of gate
- ▶ Emergency unlocking function to open the gate during power failure



## DRIVE SYSTEM INLINE 60

- ▶ Powerful drive, concealed installation in post
- ▶ Install integrated emergency unlocking
- ▶ Connect power supply
- ▶ Press button - start operation



## WIDTH/POST CLEAR WIDTH

- ▶ 3,000, 4,000, 5,000 mm

## COLOUR

Anthracite

Silver

*Other colours available on request.*

*The colours shown here may differ from the actual colours.*

## DESIGN

### Vertical bars

Height: frame dimensions (with 100 mm ground clearance) 900, 1,100, 1,300, 1,500 mm

**ST32, ST32 fine, ST65, ST110, Panel 110**

### Horizontal slats (horizontal bars)

Height: frame dimensions (with 100 mm ground clearance) 900, 1,100, 1,300, 1,500, 1,900 mm

**Q32 fine, Q65, Q110, Panel 110, Cassette 1, Cassette 2, Decor X**

### Double welded mesh mat light

Height: frame dimensions (with 100 mm ground clearance) 900, 1,100, 1,300, 1,500, 1,900 mm

# Cantilever Sliding Gate - Design Variations







## ST65

Bar width 65 mm, bar spacing approx. 40 mm



## ST Panel 110

Bar width 110 mm, bar spacing approx. 30 mm



## Q110

Bar width 110 mm, bar spacing approx. 30 mm



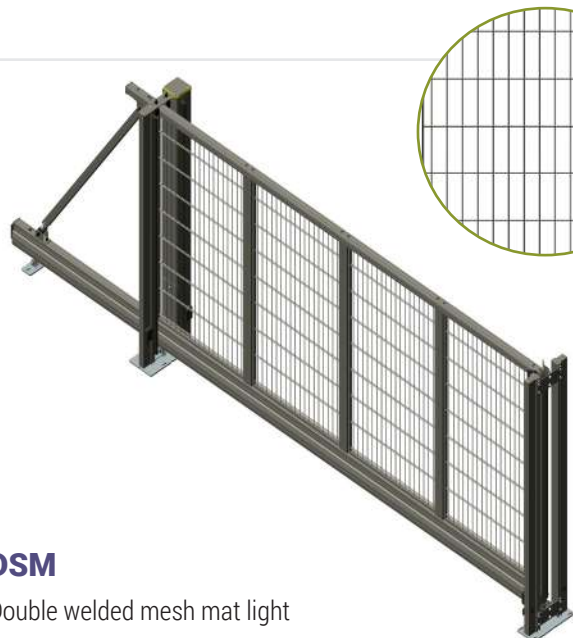
## Q Panel 110

Bar width 110 mm, privacy protection



## DECOR X

Bar width 110 mm, decor strip, privacy protection



## DSM

Double welded mesh mat light

# *Floor-guided Sliding Gate*



## MANUAL OPERATION

- ▶ Top and bottom profile HST34, 66 x 60 mm
- ▶ Vertical profiles 80x50 mm
- ▶ Ball bearing rollers, double roller guide on top profile
- ▶ Double guide post (150x150 and 110x74 mm) and double catch post (110x74 mm), incl. fixing plates
- ▶ Hook lock with 3 keys

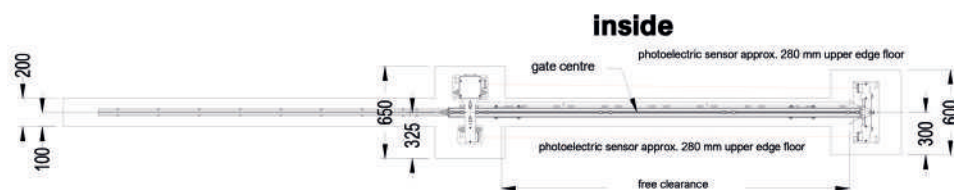
## AUTOMATIC OPERATION

- ▶ Plug & play pre-installed, top and bottom profile HST34, 66x60mm
- ▶ Vertical profiles 80x50 mm
- ▶ Ball bearing rollers, double roller guide on top profile
- ▶ Double guide post (drive post 150x150 and 110x74 mm)
- ▶ Drive motor 24 V and control unit inside post
- ▶ Toothed rack, plastic
- ▶ Safety set consisting of 1 flashing light yellow, 2 safety photoelectric sensors, 1 remote control
- ▶ Emergency unlocking function to open the gate during power failure



## DRIVE SYSTEM INLINE 60

- ▶ Powerful drive, concealed installation in post
- ▶ Install integrated emergency unlocking
- ▶ Connect power supply
- ▶ Press button - start operation



## WIDTH/POST CLEAR WIDTH

- ▶ 3,000, 4,000, 5,000 mm

## COLOUR



*Other colours available on request.  
The colours shown here may differ from the actual colours.*

## DESIGN

### Vertical bars

Height: frame dimensions (with 100 mm ground clearance) 900, 1,100, 1,300, 1,500 mm

**ST32, ST32 fine, ST65, ST110, Panel 110**

### Horizontal slats (horizontal bars)

Height: frame dimensions (with 100 mm ground clearance) 900, 1,100, 1,300, 1,500, 1,900 mm

**Q32 fine, Q65, Q110, Panel 110, Cassette 1, Cassette 2, Decor X**

### Double welded mesh mat light

Height: frame dimensions (with 100 mm ground clearance) 900, 1,100, 1,300, 1,500, 1,900 mm



# Floor-guided Sliding Gate - Design Variations



## ST32

Bar width 32 mm, bar spacing approx. 100 mm



## ST32 fine

Bar width 32 mm, bar spacing approx. 50 mm



## Q32

Bar width 32 mm, bar spacing approx. 50 mm



## Q65

Bar width 65 mm, bar spacing approx. 40 mm



## CASSETTE 1

Bar width 110 mm, 1 crossbeam, privacy protection



## CASSETTE 2

Bar width 110 mm, 2 crossbeams, privacy protection





## ST65

Bar width 65 mm, bar spacing approx. 40 mm



## ST Panel 110

Bar width 110 mm, bar spacing approx. 30 mm



## Q110

Bar width 110 mm, bar spacing approx. 30 mm



## Q Panel 110

Bar width 110 mm, privacy protection



## DECOR X

Bar width 110 mm, decor strip, privacy protection



## DSM

Double welded mesh mat light

# *Swing Gate*

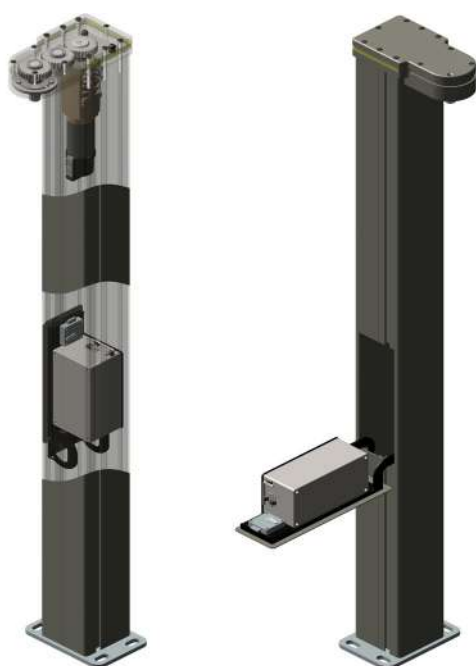


## MANUAL OPERATION

- ▶ Frame construction top and bottom profile 50x60 mm and vertical profiles 40x60 mm
- ▶ 2 posts 80x80 to embed in concrete
- ▶ Built-in lock (1-leaf) or central locking (2-leaf) with 3 keys
- ▶ 1 or 2 hinge breakage protections
- ▶ Aesthetic, stainless steel handle set

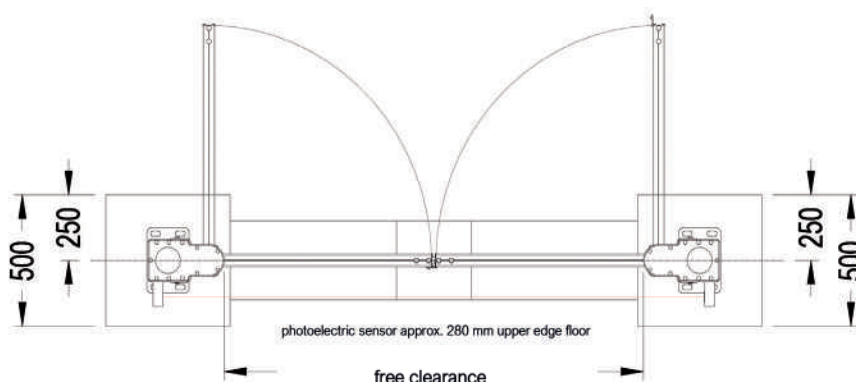
## AUTOMATIC OPERATION

- ▶ Frame construction top and bottom profile 50x60 mm and vertical profiles 40x60 mm
- ▶ 2 post profiles 150x150 mm incl. fixing plate
- ▶ 1 or 2 drive units integrated in post
- ▶ Safety set consisting of flashing light yellow and safety photoelectric sensor, 1 remote control
- ▶ Emergency unlocking function to open the gate during power failure
- ▶ 1 or 2 hinge breakage protections



## DRIVE SYSTEM SWING GATE INLINE H30K

- ▶ Powerful drive, concealed installation in post
- ▶ Install integrated emergency unlocking
- ▶ Connect power supply
- ▶ Press button - start operation



## WIDTH/POST CLEAR WIDTH

- ▶ Width/post clear width 1-leaf: 1,870 and 2,730 mm
- ▶ Width/post clear width 2-leaf: 1,990, 3,710 and 5,430 mm

## COLOUR

Anthracite

Silver

*Other colours available on request.  
The colours shown here may differ from the actual colours.*

## DESIGN

### Vertical bars

Height: frame dimensions (with 100 mm ground clearance) 900, 1,100, 1,300, 1,500 mm

**ST32, ST32 fine, ST65, ST110, Panel 110**

### Horizontal slats (horizontal bars)

Height: frame dimensions (with 100 mm ground clearance) 900, 1,100, 1,300, 1,500, 1,900 mm

**Q32 fine, Q65, Q110, Panel 110, Cassette 1, Cassette 2, Decor X**

### Double welded mesh mat light

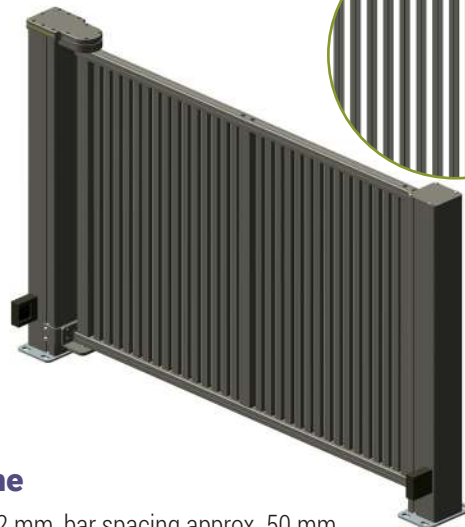
Height: frame dimensions (with 100 mm ground clearance) 900, 1,100, 1,300, 1,500, 1,900 mm

# Swing Gate - Design Variations



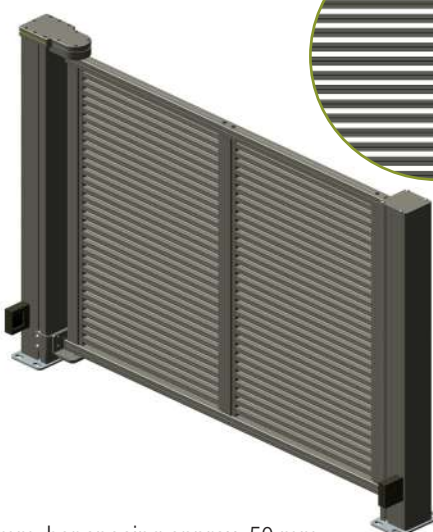
## ST32

Bar width 32 mm, bar spacing approx. 100 mm



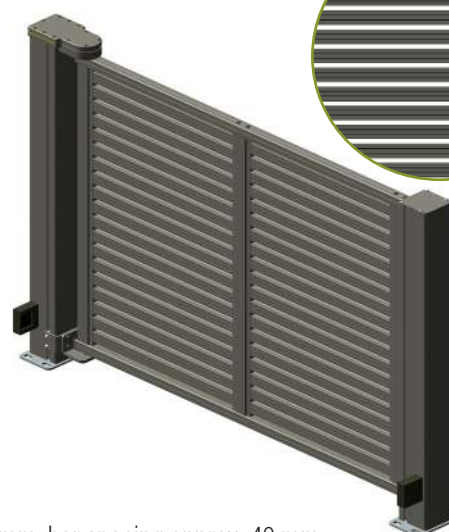
## ST32 fine

Bar width 32 mm, bar spacing approx. 50 mm



## Q32

Bar width 32 mm, bar spacing approx. 50 mm



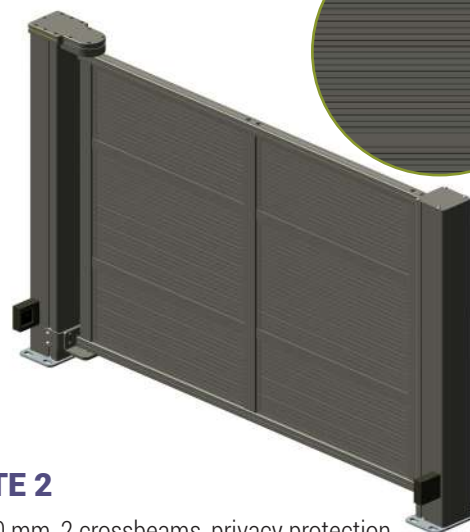
## Q65

Bar width 65 mm, bar spacing approx. 40 mm



## CASSETTE 1

Bar width 110 mm, 1 crossbeam, privacy protection



## CASSETTE 2

Bar width 110 mm, 2 crossbeams, privacy protection





## ST65

Bar width 65 mm, bar spacing approx. 40 mm



## ST Panel 110

Bar width 110 mm, bar spacing approx. 30 mm



## Q110

Bar width 110 mm, bar spacing approx. 30 mm



## Q Panel 110

Bar width 110 mm, privacy protection



## DECOR X

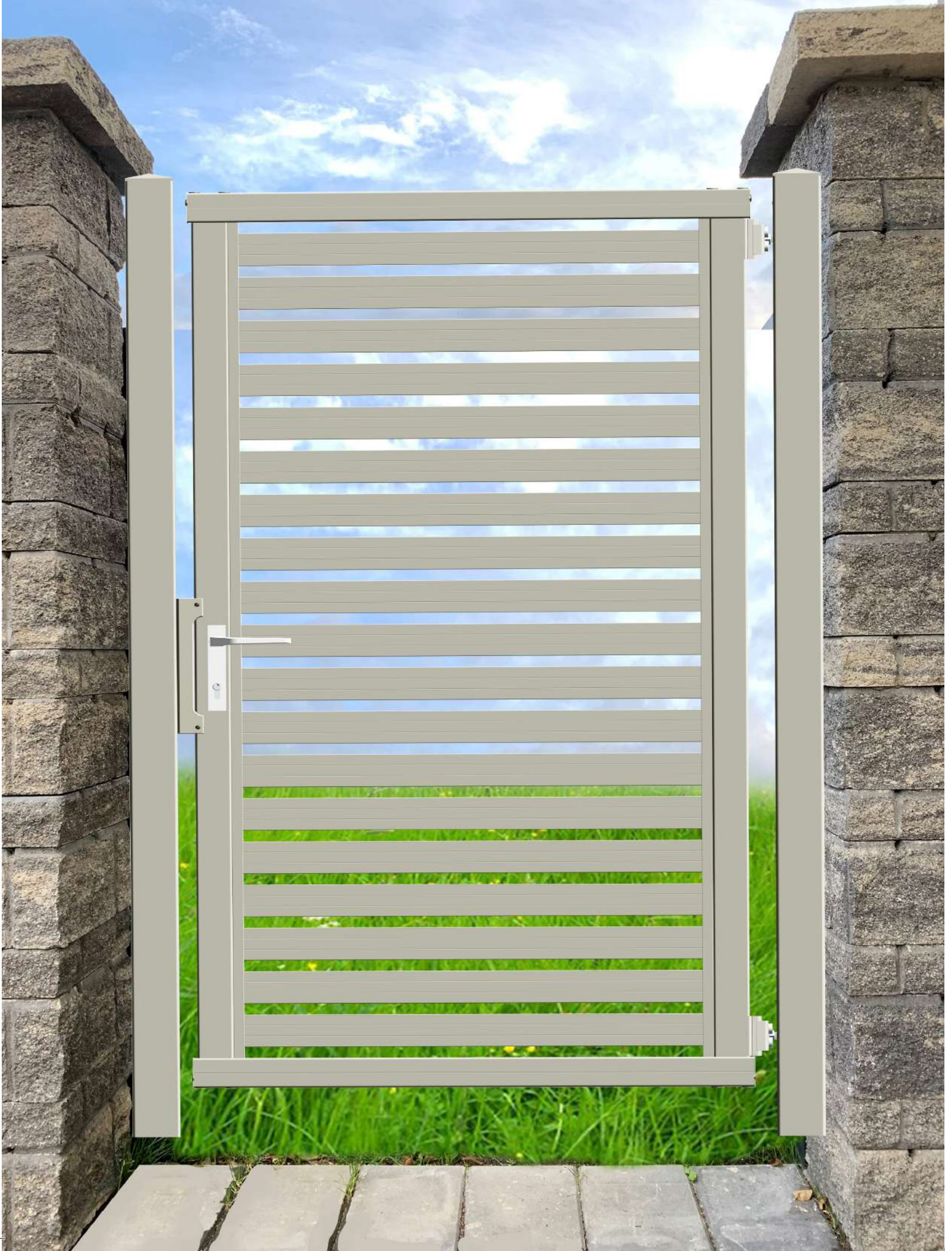
Bar width 110 mm, decor strip, privacy protection



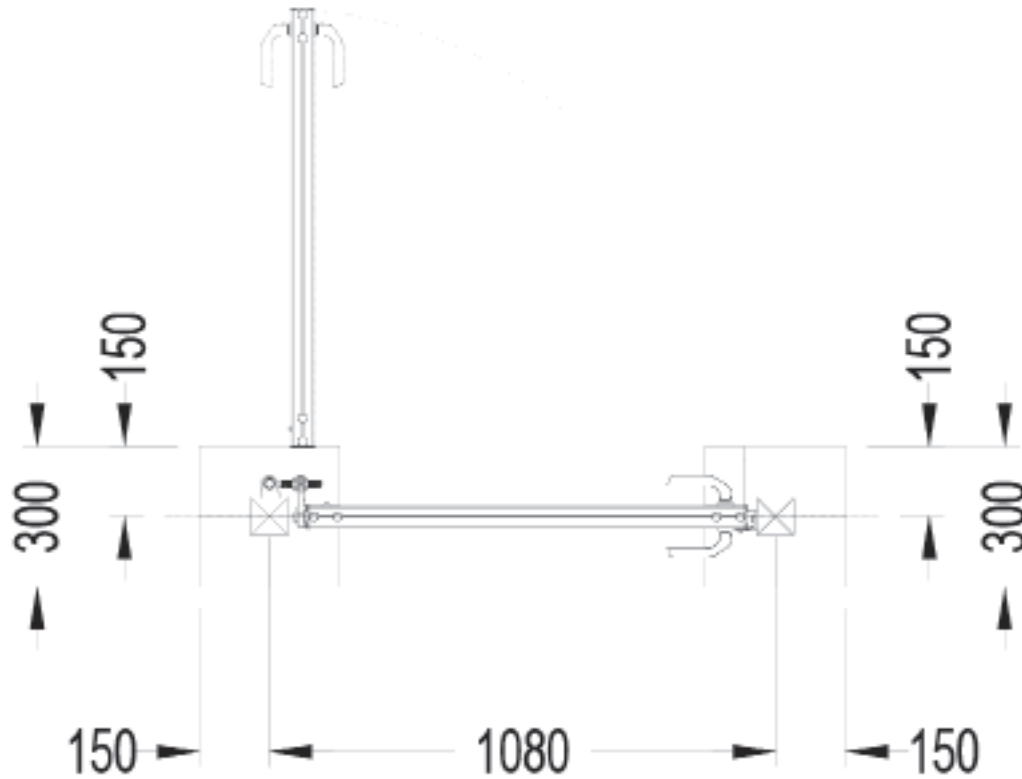
## DSM

Double welded mesh mat light

# *Pedestrian Gate*







## WIDTH/POST CLEAR WIDTH

- Width/post clear width 1,000 mm

## COLOUR

Anthracite

Silver

*Other colours available on request.  
The colours shown here may differ from the actual colours.*

## DESIGN

### Vertical bars

Height: frame dimensions (with 100 mm ground clearance) 900, 1,100, 1,300, 1,500 mm

**ST32, ST32 fine, ST65, ST110, Panel 110**

### Horizontal slats (horizontal bars)

Height: frame dimensions (with 100 mm ground clearance) 900, 1,100, 1,300, 1,500, 1,900 mm

**Q32 fine, Q65, Q110, Panel 110, Cassette 1, Cassette 2, Decor X**

### Double welded mesh mat light

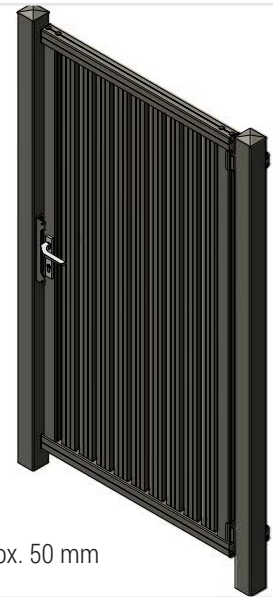
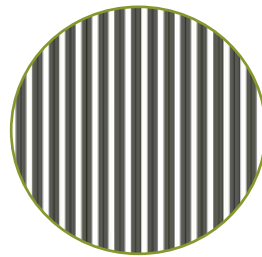
Height: frame dimensions (with 100 mm ground clearance) 900, 1,100, 1,300, 1,500, 1,900 mm

# *Pedestrian Gate - Design Variations*



## **ST32**

Bar width 32 mm, bar spacing approx. 100 mm



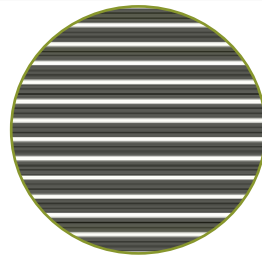
## **ST32 fine**

Bar width 32 mm, bar spacing approx. 50 mm



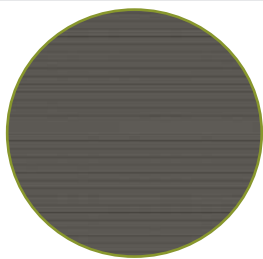
## **Q32**

Bar width 32 mm, bar spacing approx. 50 mm



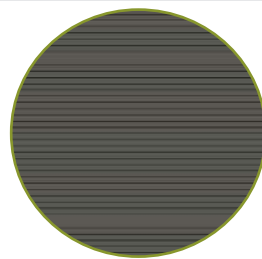
## **Q65**

Bar width 65 mm, bar spacing approx. 40 mm



## **CASSETTE 1**

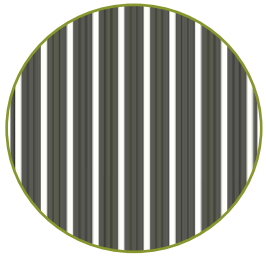
Bar width 110 mm, 1 crossbeam, privacy protection



## **CASSETTE 2**

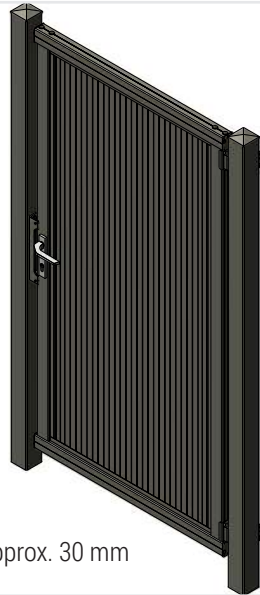
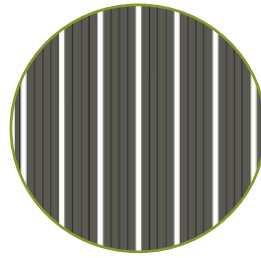
Bar width 110 mm, 2 crossbeams, privacy protection





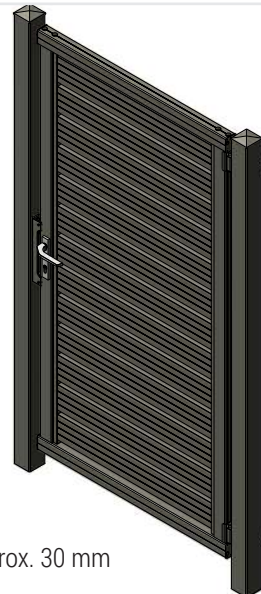
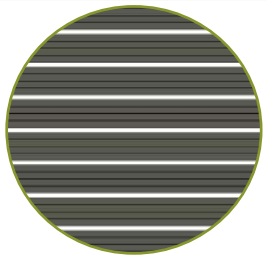
## ST65

Bar width 65 mm, bar spacing approx. 40 mm



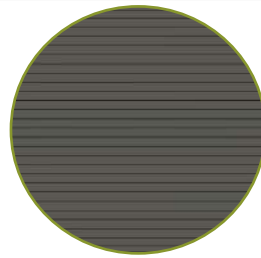
## ST Panel 110

Bar width 110 mm, bar spacing approx. 30 mm



## Q110

Bar width 110 mm, bar spacing approx. 30 mm



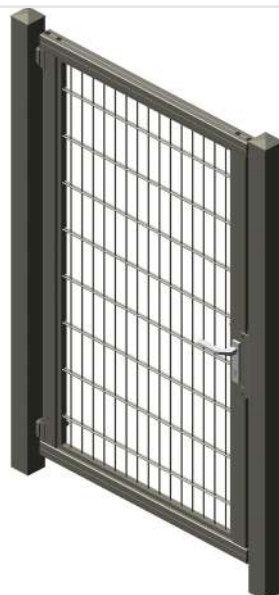
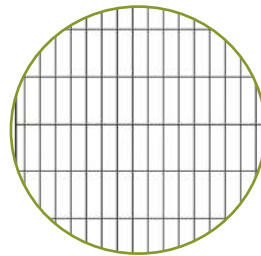
## Q Panel 110

Bar width 110 mm, privacy protection



## DECOR X

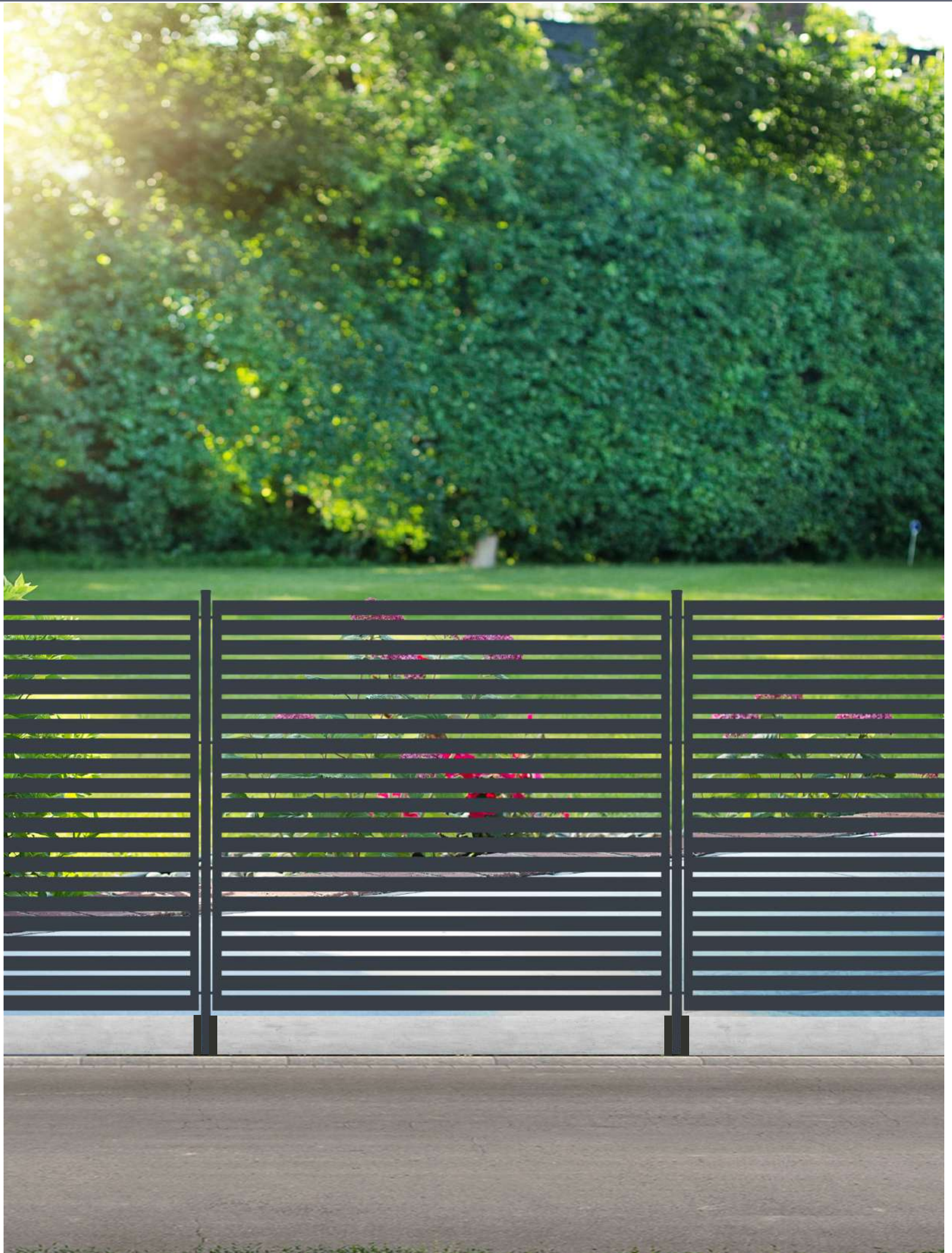
Bar width 110 mm, decor strip, privacy protection



## DSM

Double welded mesh mat light

# *Aluminium Fence*





## KEY FEATURES

- ▶ Width fence panel 2,000 mm
- ▶ Packed disassembled in carton incl. screw material
- ▶ Aluminium fence in 6 different designs
- ▶ 3 different bar widths, 32 mm, 65 mm and 110 mm
- ▶ Supreme quality power coat finish, scratch and weather resistant
- ▶ Easy length adjustment



### ST32

Bar width 32 mm  
Bar spacing approx. 100 mm



### ST32 fine

Bar width 32 mm  
Bar spacing approx. 50 mm



### ST65

Bar width 65 mm  
Bar spacing approx. 40 mm



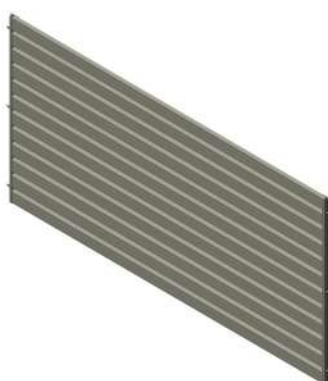
### ST Panel 110

Bar width 110 mm  
Bar spacing approx. 30 mm



### Q32

Bar width 32 mm  
Bar spacing approx. 50 mm



### Q65

Bar width 65 mm  
Bar spacing approx. 40 mm



### Q110

Bar width 110 mm  
Bar spacing approx. 30 mm

## WIDTH

- ▶ Width 2,000 mm

## COLOUR

Anthracite

Silver

*Other colours available on request.  
The colours shown here may differ from the actual colours.*

## DESIGN

### Vertical bars

**ST32, ST32 fine, ST65, ST110,**

Height: frame dimensions 800, 1,000, 1,200, 1,400 mm (without ground clearance - panel height)

### Horizontal slats (horizontal bars)

**Q32 fine, Q65, Q110**

Height: frame dimensions 800, 1,000, 1,200, 1,400, 1,800 mm (without ground clearance - panel height)

We have been manufacturing high-quality aluminium gates and fences at our Wagna plant in Austria since 1992.

Curiosity and passionate enthusiasm for technology are our motor and motivation. Our engineering team is focused on the development of innovative solutions but also works on the optimisation of existing products to potentially improve them. We trust in traditional craftsmanship and the most advanced technology to deliver tailor-made solutions for a broad product portfolio.

Our highly qualified team accompanies every project from consulting, planning and technical clarification to shipping. We are on hand even after project completion to provide comprehensive support and service.

Your local partner

**Holler Tore GmbH**

Dorfstraße 31  
8435 WAGNA  
AUSTRIA

Tel. +43 3452 86031  
Fax +43 3452 75831

[mail@holler-tore.at](mailto:mail@holler-tore.at)  
[www.holler-tore.at](http://www.holler-tore.at)

